



LUMINAUT

PULASKI COUNTY COURTHOUSE  
PULASKI COUNTY JOINT MEETING PRESENTATION  
04.10.2023

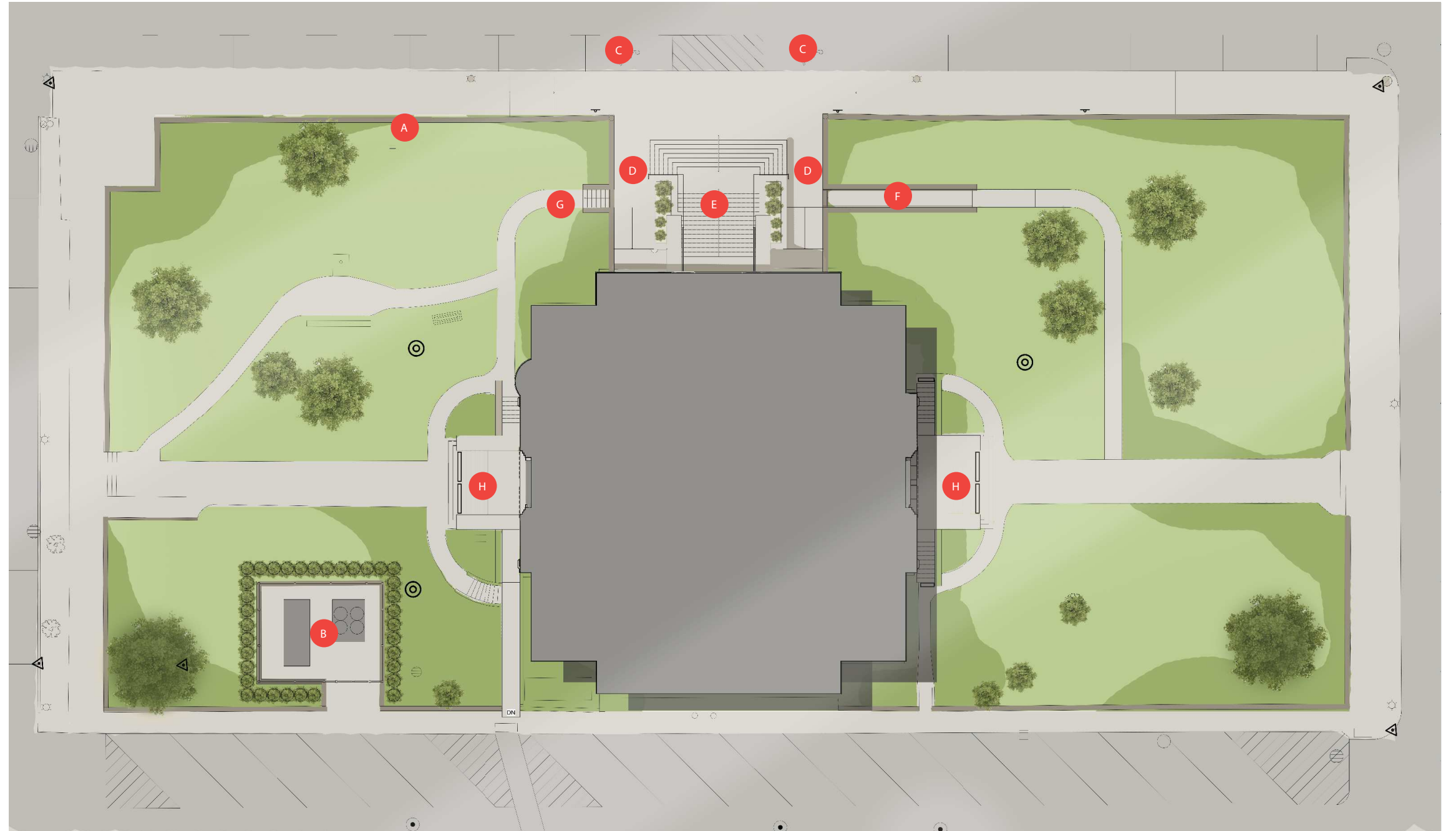


Existing Aerial Image



# Rendered Site Plan

- A** Rebuilt Historic Retaining Wall
- B** New Utility Enclosure for Chiller and Generator
- C** Relocated ADA Compliant Parking
- D** New Walkway to Access Lower Level
- E** New North Stair
- F** New ADA Compliant Ramp
- G** New Stair
- H** Planters at Existing East/West Stairs



Scale: 1/2" = 1'-0"

Existing Exterior Images



# Arsee North Stair Elevation - Masonry Work

THE FOLLOWING IS THE ENGINEER'S ESTIMATE OF QUANTITIES FOR EACH TYPE OF REPAIR SPECIFIED. THESE ARE PROVIDED FOR REFERENCE ONLY. IT IS THE CONTRACTOR'S RESPONSIBILITY TO INSPECT THE BUILDING THOROUGHLY PRIOR TO BIDDING TO DETERMINE THE QUANTITY OF MATERIALS, LABOR AND OTHER SERVICES REQUIRED TO SAFELY COMPLETE THE SPECIFIED REPAIRS AND TO INCLUDE THESE IN HIS BID.

## REPAIR PROCEDURE LEGEND

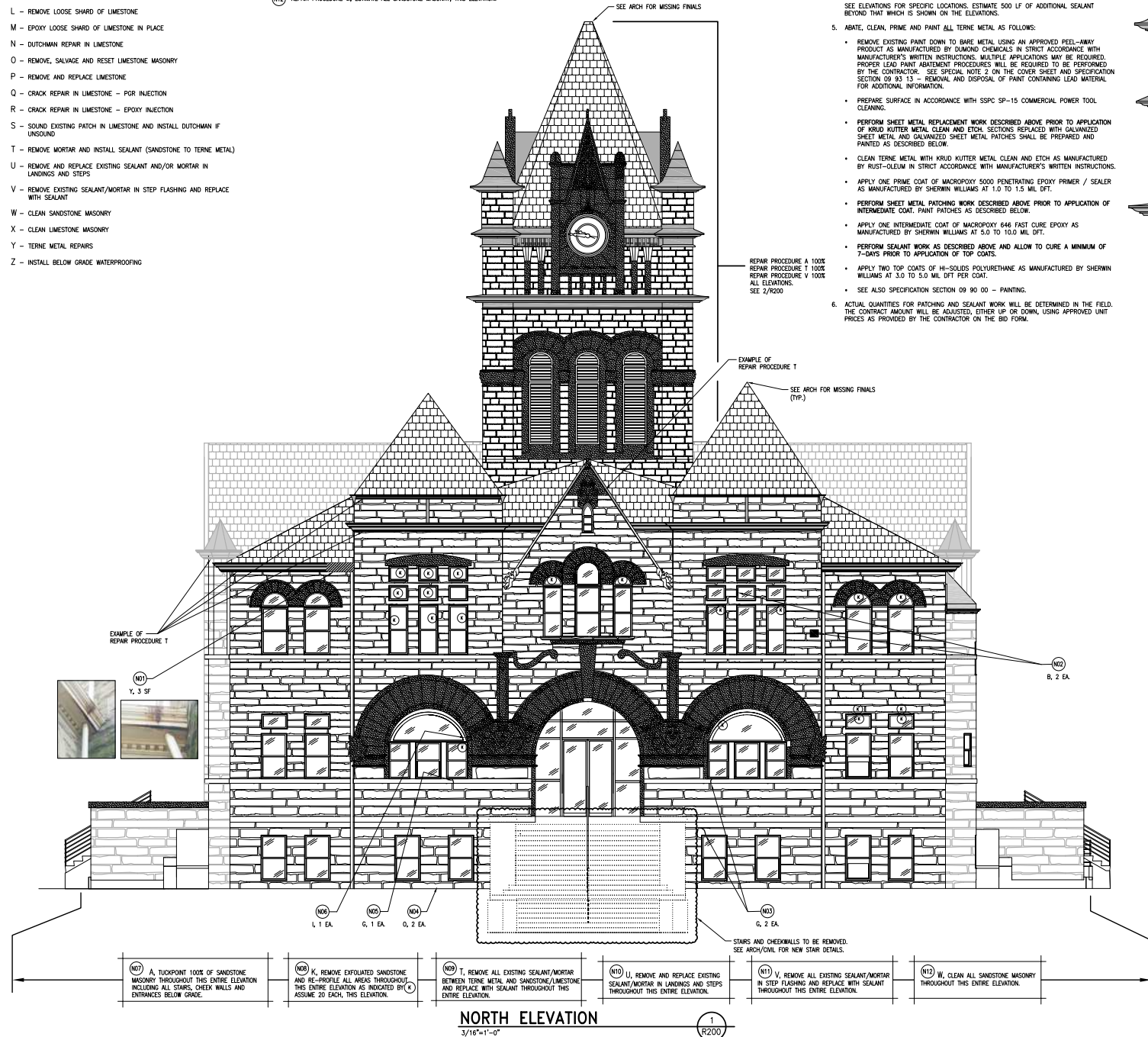
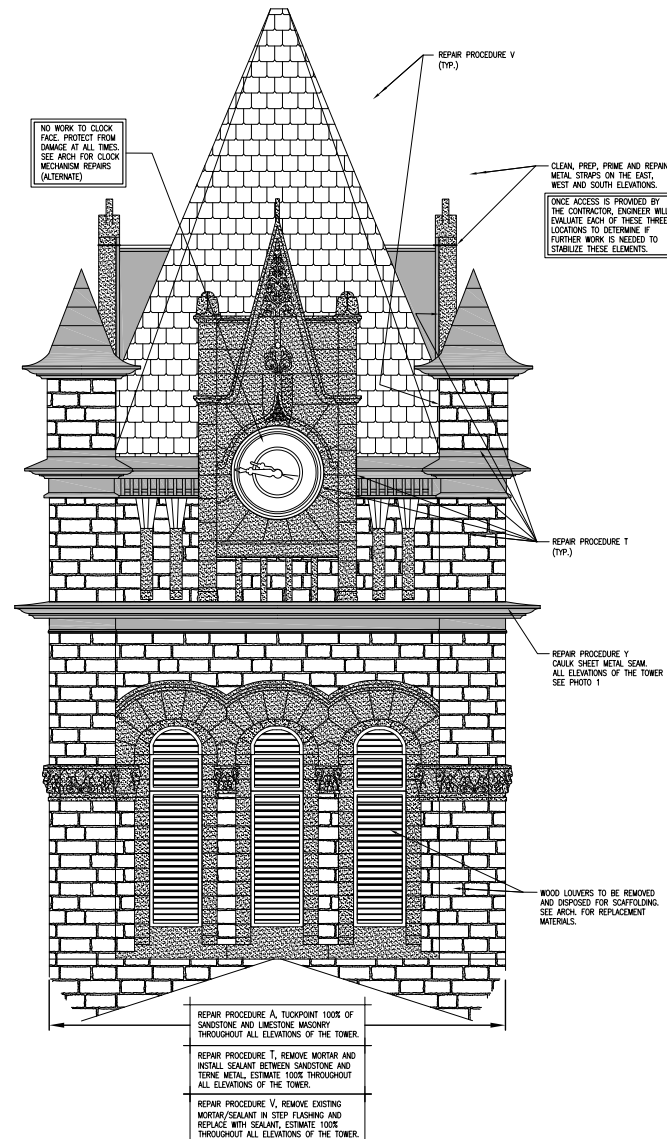
- A - TUCKPOINTING
- B - REMOVE LOOSE SHARD OF SANDSTONE
- C - EPOXY LOOSE SHARD OF LIMESTONE IN PLACE
- D - DUTCHMAN REPAIR IN SANDSTONE
- E - REMOVE, SALVAGE AND RESET SANDSTONE MASONRY
- F - REMOVE AND REPLACE SANDSTONE
- G - CRACK REPAIR IN SANDSTONE - PGR INJECTION
- H - CRACK REPAIR IN SANDSTONE - EPOXY INJECTION
- I - SOUND EXISTING PATCH IN SANDSTONE AND INSTALL DUTCHMAN IF UNSOUND
- J - REMOVE METAL EMBEDMENT IN SANDSTONE AND PATCH
- K - REPROFILE EXFOLIATED SANDSTONE
- L - REMOVE LOOSE SHARD OF LIMESTONE
- M - EPOXY LOOSE SHARD OF LIMESTONE IN PLACE
- N - DUTCHMAN REPAIR IN LIMESTONE
- O - REMOVE, SALVAGE AND RESET LIMESTONE MASONRY
- P - REMOVE AND REPLACE LIMESTONE
- Q - CRACK REPAIR IN LIMESTONE - PGR INJECTION
- R - CRACK REPAIR IN LIMESTONE - EPOXY INJECTION
- S - SOUND EXISTING PATCH IN LIMESTONE AND INSTALL DUTCHMAN IF UNSOUND
- T - REMOVE MORTAR AND INSTALL SEALANT (SANDSTONE TO TERNE METAL)
- U - REMOVE AND REPLACE EXISTING SEALANT AND/OR MORTAR IN LANDINGS AND STEPS
- V - REMOVE EXISTING SEALANT/MORTAR IN STEP FLASHING AND REPLACE WITH SEALANT
- W - CLEAN SANDSTONE MASONRY
- X - CLEAN LIMESTONE MASONRY
- Y - TERNE METAL REPAIRS
- Z - INSTALL BELOW GRADE WATERPROOFING

## NORTH ELEVATION REPAIRS

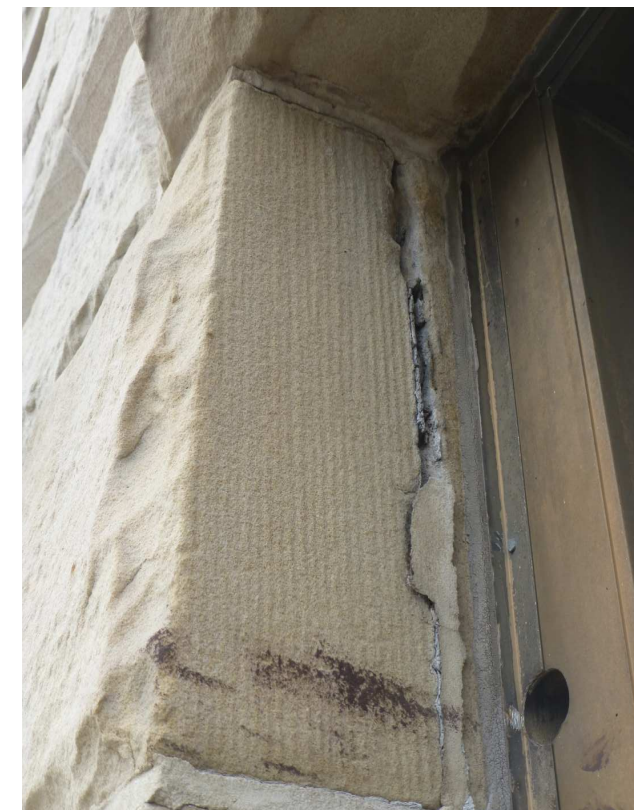
- (N0) REPAIR PROCEDURE Y, ESTIMATE 3 SF, THIS ELEVATION.
- (N0) REPAIR PROCEDURE B, ESTIMATE 2 EACH, THIS ELEVATION.
- (N0) REPAIR PROCEDURE G, ESTIMATE 2 EACH, THIS ELEVATION.
- (N0) REPAIR PROCEDURE G, ESTIMATE 2 EACH, THIS ELEVATION.
- (N0) REPAIR PROCEDURE G, ESTIMATE 1 EACH, THIS ELEVATION.
- (N0) REPAIR PROCEDURE I, ESTIMATE 1 EACH, THIS ELEVATION.
- (N0) REPAIR PROCEDURE A, ESTIMATE 100% THIS ENTIRE ELEVATION.
- (N0) REPAIR PROCEDURE K, ESTIMATE 20 EACH AS INDICATED BY (C) THIS ELEVATION.
- (N0) REPAIR PROCEDURE T, ESTIMATE ALL EXISTING SEALANT/MORTAR BETWEEN TERNE METAL AND SANDSTONE/LIMESTONE, THIS ELEVATION.
- (N0) REPAIR PROCEDURE U, ESTIMATE ALL EXISTING SEALANT/MORTAR IN LANDINGS AND STEPS, THIS ELEVATION.
- (N1) REPAIR PROCEDURE V, ESTIMATE ALL EXISTING SEALANT/MORTAR IN STEP FLASHING, THIS ELEVATION.
- (N1) REPAIR PROCEDURE W, ESTIMATE ALL SANDSTONE MASONRY, THIS ELEVATION.

## PROCEDURE NOTES REPAIR Y - TERNE METAL REPAIRS:

- EXISTING TERNE METAL DESIGNATED BY (Y).
- DETERIORATED SECTIONS OF TERNE METAL SHALL BE REMOVED AND REPLACED IN THEIR ENTIRETY. REPLACEMENT SECTIONS SHALL MATCH EXISTING SHAPE AND PROFILE IN ALL DETAILS. REPLACEMENT SECTIONS SHALL BE FABRICATED USING 24GA. ASTM A653 C-40 HOT-DIPPED GALVANIZED SHEET METAL. LAP 6" MIN. OVER EXISTING TERNE METAL TO REMAIN. INSTALL TWO CONTINUOUS BEADS OF BUTYL SEALANT AT LAP. IMMEDIATELY CLEAN ANY EXCESS BUTYL. CONSTRUCTION AND CONDITION OF BACKING STRUCTURE UNKNOWN. CONTRACTOR SHALL ASSUME REPAIR AND / OR REPLACEMENT OF THE BACKING STRUCTURE DIRECTLY BEHIND THE SECTION TO BE REPLACED WILL BE NECESSARY TO COMPLETE THE WORK.  
ESTIMATE 2 TOTAL REPLACEMENT SECTIONS. SEE ELEVATIONS FOR LOCATION.
- PATCH HOLES WITH 24GA. ASTM A653 C-40 HOT-DIPPED GALVANIZED SHEET METAL. SET IN CONTINUOUS BEAD OF BUTYL SEALANT AROUND PERIMETER OF PATCH AND POP NAIL TO EXISTING TERNE METAL. IMMEDIATELY CLEAN ANY EXCESS BUTYL. SEAL AROUND EDGES OF PATCH WITH SEALANT.  
ESTIMATE 20 PATCHES. REPLACE ALL EXISTING PATCHES IN A SIMILAR MANNER. ESTIMATE 15 EXISTING PATCHES. ESTIMATE 35 TOTAL PATCHES (20 + 15).  
NOTE: CLEAN WITH KRUD KUTTER AND PRIME BOTH SIDES OF PATCHES PRIOR TO INSTALLATION.
- SEAL OPEN SEAMS WITH SEALANT.  
SEE ELEVATIONS FOR SPECIFIC LOCATIONS. ESTIMATE 500 LF OF ADDITIONAL SEALANT BEYOND THAT WHICH IS SHOWN ON THE ELEVATIONS.
- ABATE, CLEAN, PRIME AND PAINT ALL TERNE METAL AS FOLLOWS:
  - REMOVE EXISTING PAINT DOWN TO BARE METAL USING AN APPROVED PEEL-AWAY PRODUCT AS MANUFACTURED BY DUNLOP CHEMICALS IN STRICT ACCORDANCE WITH MANUFACTURER'S WRITTEN INSTRUCTIONS. MULTIPLE APPLICATIONS MAY BE REQUIRED. PROPER LEAD PAINT ABATEMENT PROCEDURES WILL BE REQUIRED TO BE PERFORMED BY THE CONTRACTOR. SEE SPECIAL NOTE 2 ON THE COVER SHEET AND SPECIFICATION SECTION 09 93 13 - REMOVAL AND DISPOSAL OF PAINT CONTAINING LEAD MATERIAL FOR ADDITIONAL INFORMATION.
  - PREPARE SURFACE IN ACCORDANCE WITH SSPC SP-15 COMMERCIAL POWER TOOL CLEANING.
  - PERFORM SHEET METAL PATCHING WORK DESCRIBED ABOVE PRIOR TO APPLICATION OF KRUD KUTTER METAL CLEANER AND ETCH. SECTIONS REPLACED WITH GALVANIZED SHEET METAL AND GALVANIZED SHEET METAL PATCHES SHALL BE PREPARED AND PAINTED AS DESCRIBED BELOW.
  - CLEAN TERNE METAL WITH KRUD KUTTER METAL CLEANER AND ETCH AS MANUFACTURED BY RUST-OLEUM IN STRICT ACCORDANCE WITH MANUFACTURER'S WRITTEN INSTRUCTIONS.
  - APPLY ONE PRIME COAT OF MACROPOXY 5000 PENETRATING EPOXY PRIMER / SEALER AS MANUFACTURED BY SHERWIN WILLIAMS AT 1.0 TO 1.5 MIL DFT.
  - PERFORM SHEET METAL PATCHING WORK DESCRIBED ABOVE PRIOR TO APPLICATION OF INTERMEDIATE COAT. PAINT PATCHES AS DESCRIBED BELOW.
  - APPLY ONE INTERMEDIATE COAT OF MACROPOXY 646 FACT CURE EPOXY AS MANUFACTURED BY SHERWIN WILLIAMS AT 5.0 TO 10.0 MIL DFT.
  - PERFORM SEALANT WORK AS DESCRIBED ABOVE AND ALLOW TO CURE A MINIMUM OF 7-DAYS PRIOR TO APPLICATION OF TOP COATS.
  - APPLY TWO TOP COATS OF HI-SOLIDS POLYURETHANE AS MANUFACTURED BY SHERWIN WILLIAMS AT 3.0 TO 5.0 MIL DFT PER COAT.
  - SEE ALSO SPECIFICATION SECTION 09 00 00 - PAINTING.
- ACTUAL QUANTITIES FOR PATCHING AND SEALANT WORK WILL BE DETERMINED IN THE FIELD. THE CONTRACT AMOUNT WILL BE ADJUSTED, EITHER UP OR DOWN, USING APPROVED UNIT PRICES AS PROVIDED BY THE CONTRACTOR ON THE BID FORM.



LEGEND	
	TERNE METAL
	ROCK FACE SANDSTONE MASONRY
	CUT SANDSTONE
	SLATE ROOFING TILE SEE R100
	CONCRETE



New North Stair

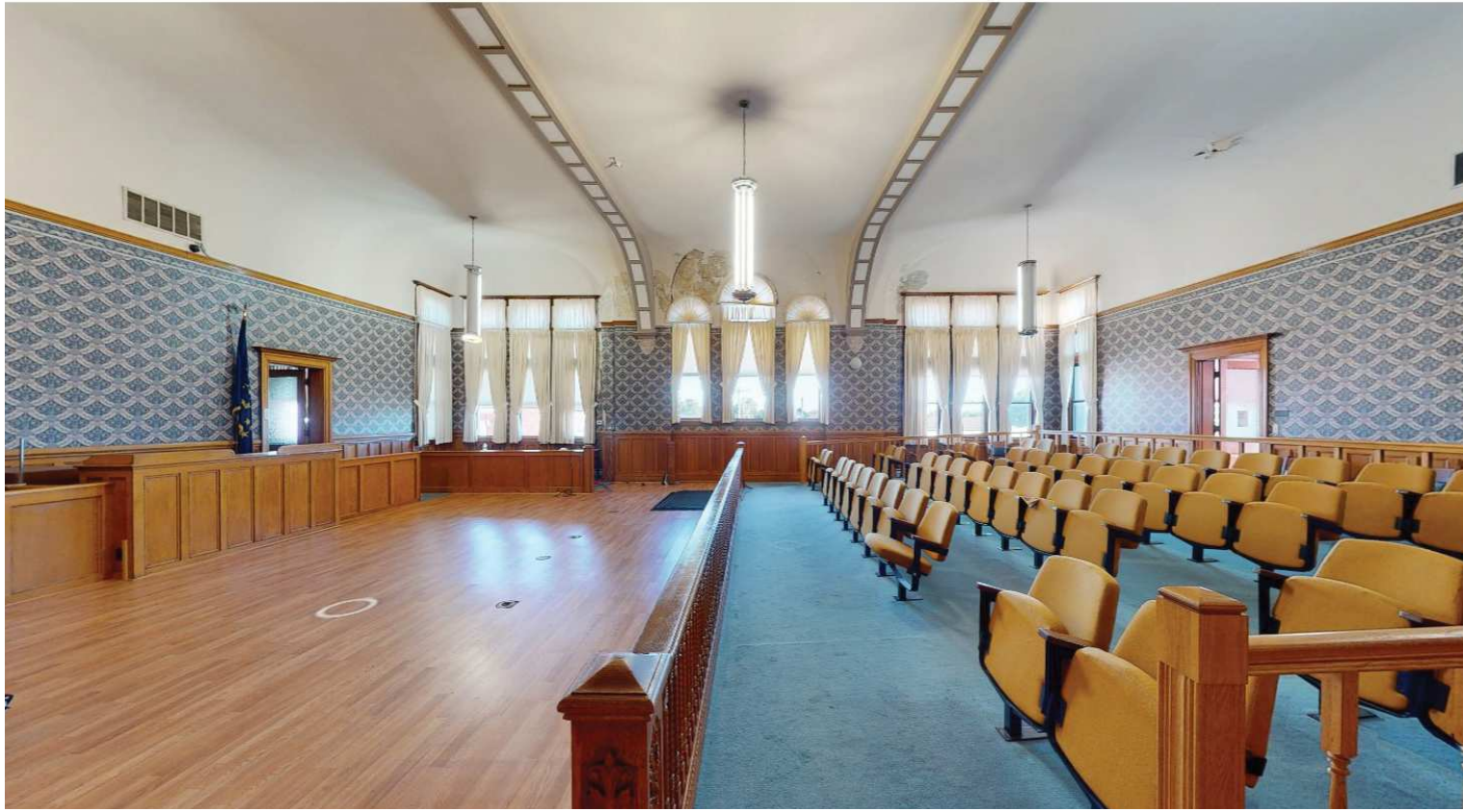


New East / West Storefront





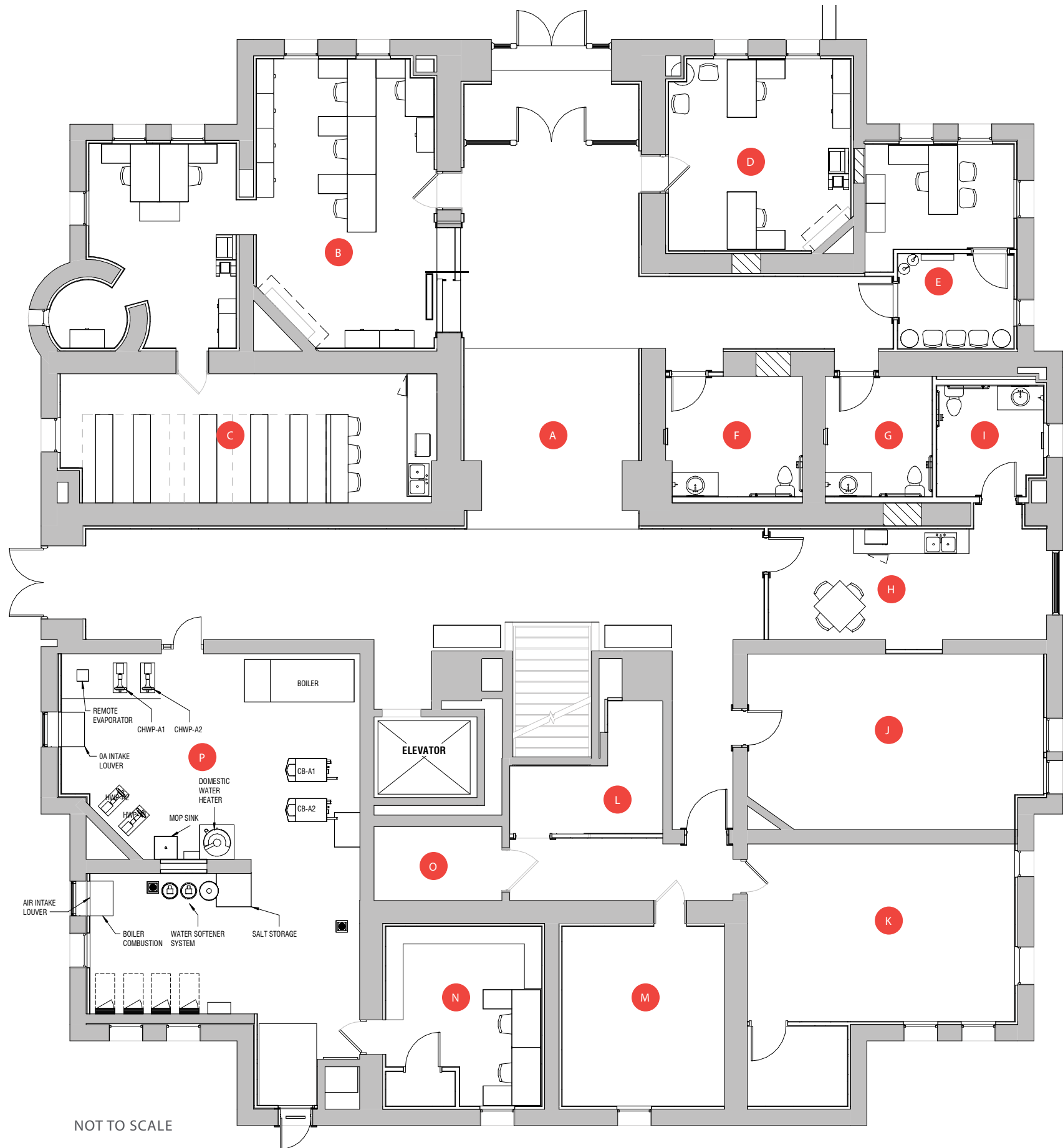
# Interior Images



# Overall Plan

Lower Level

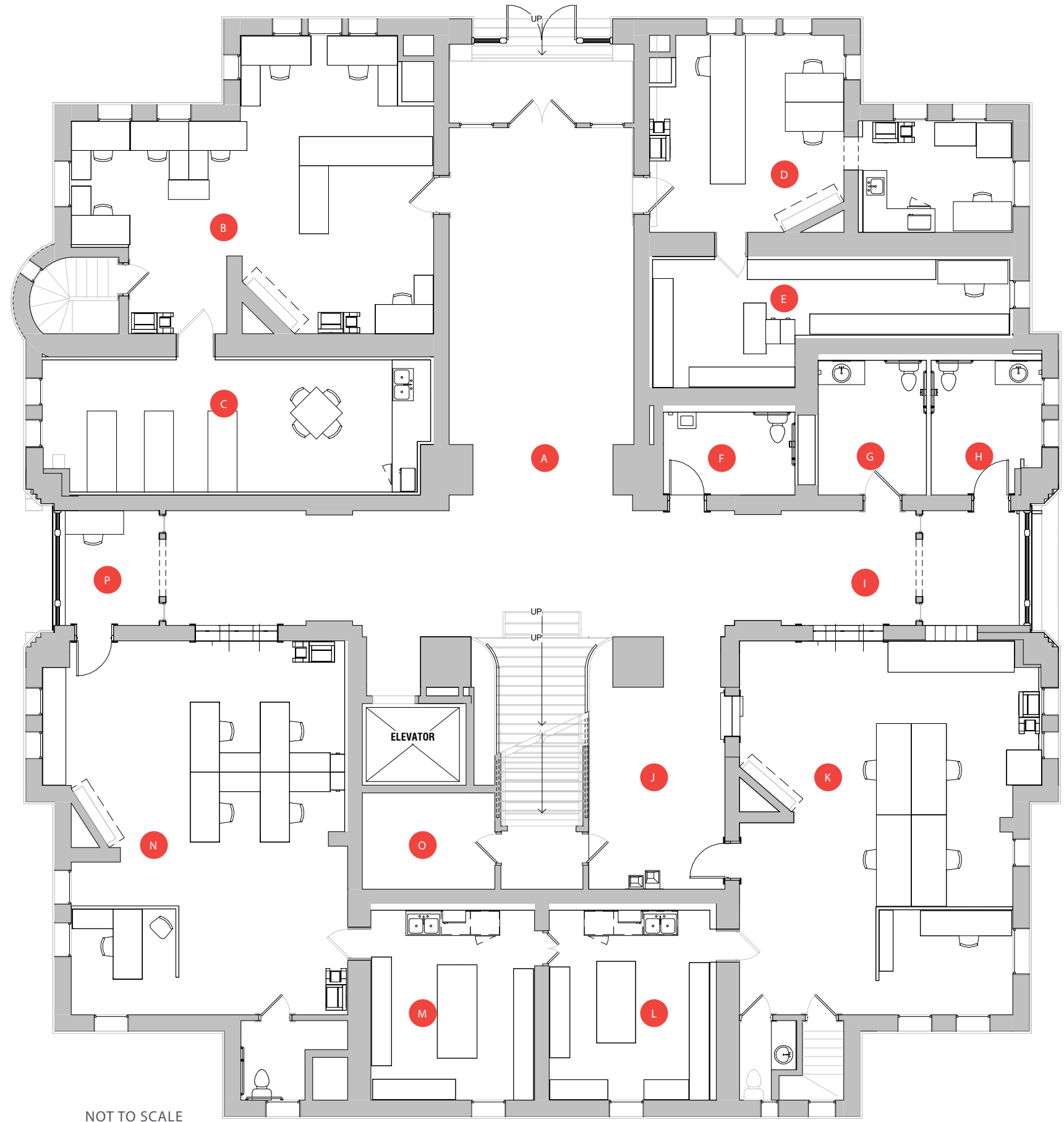
- A Main Corridor
- B Clerk Department
- C Clerk Vault
- D Security Office
- E Veteran Services Office
- F Women's Restroom
- G Men's Restroom
- H Staff Breakroom
- I Staff Restroom
- J Auditor's Storage
- K Clerk's Storage
- L IT Work Room
- M Telecom Room
- N Maintenance/Storage
- O Elevator Machine Room
- P Mechanical/Electrical



# Overall Plan

## First Floor

- A Main Corridor
- B Assessor Department
- C Assessor Vault
- D Recorder Department
- E Recorder Vault
- F Men's Restroom
- G Women's Restroom
- H Staff Restroom
- I East Vestibule
- J Waiting Area
- K Auditor Office
- L Auditor Vault
- M Treasurer Vault
- N Treasurer Department
- O Storage
- P West Vestibule



# Main Stairway

## Color Elevations



Elevation 01

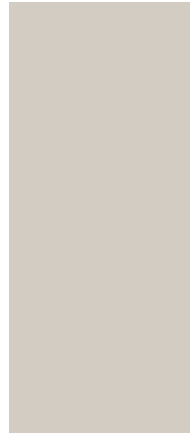
## Finishes & Fixtures



Existing Wainscoting



Existing Tile



Overall Paint



Accent Paint



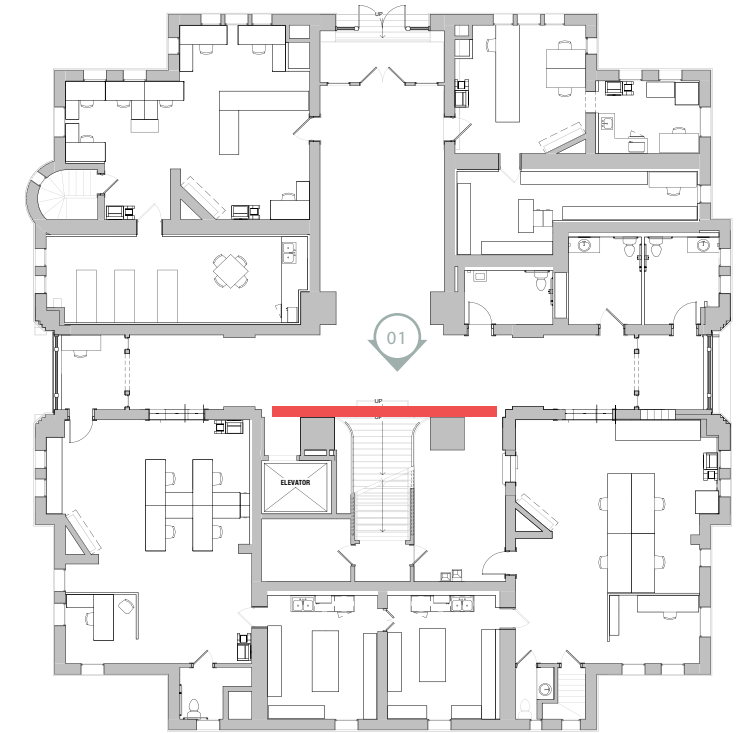
Accent Paint



Pendant Light



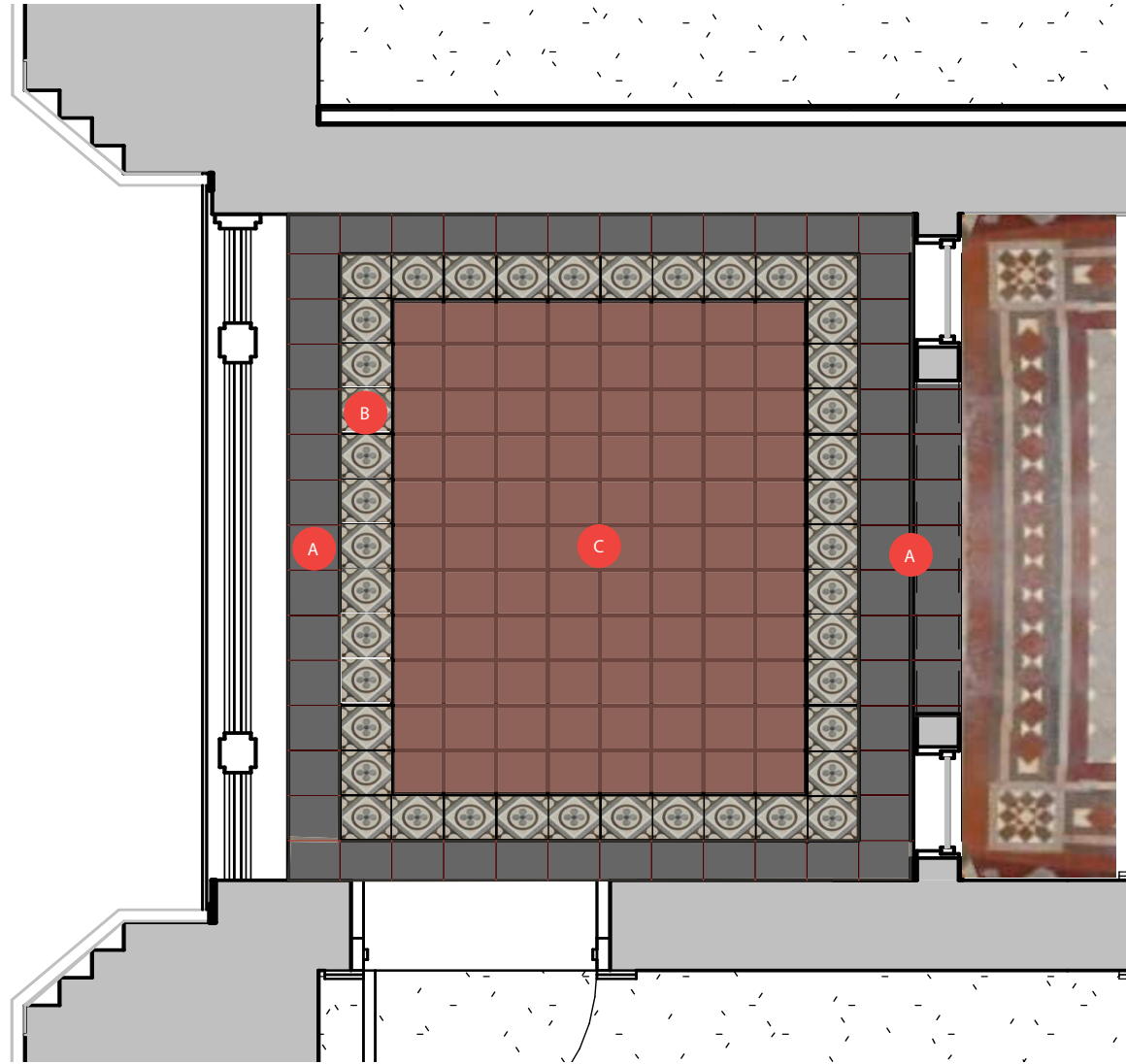
Chandelier



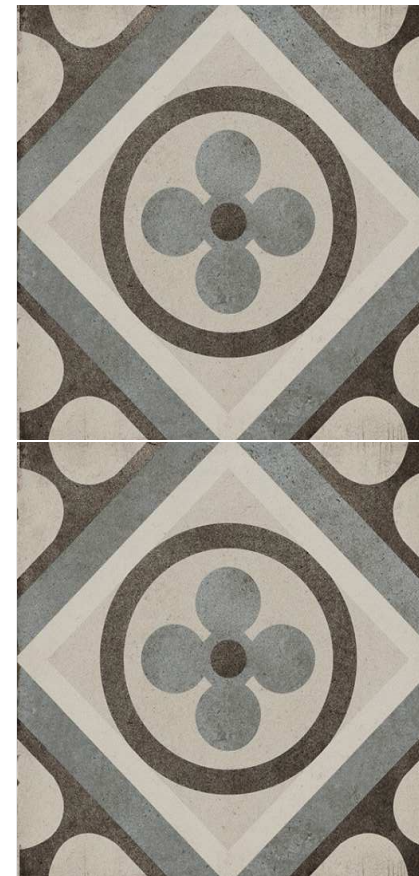
Key Plan

# Typical Vestibule

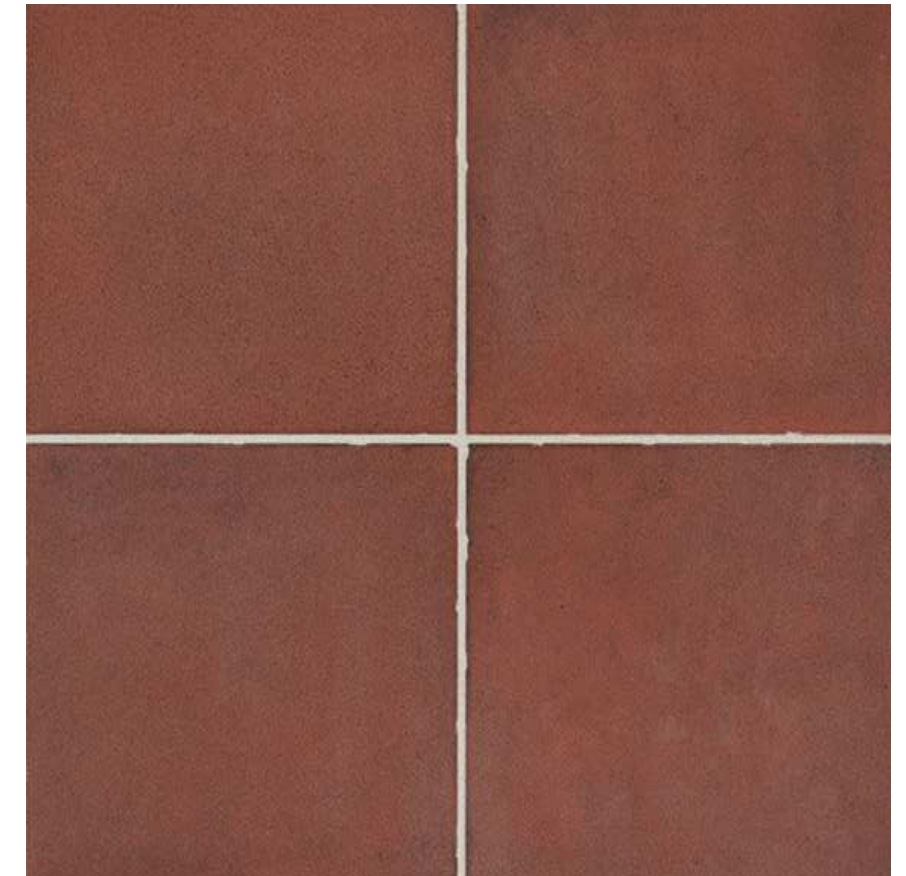
Tile Pattern



A Border Tile



B Pattern Tile



C Solid Red Tile

First Floor West Vestibule  
Not to Scale

# Typical Service Counter

Color Elevations

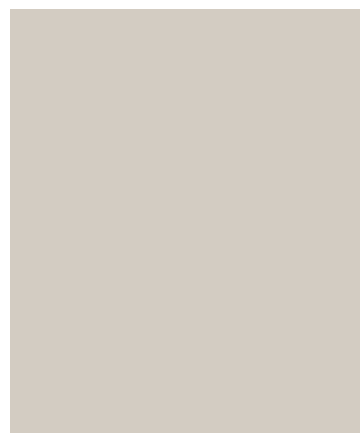


Service Counter

## Finishes & Fixtures



Existing Wainscoting



Overall Paint



Solid Surface Countertop



Pendant Light



Chandelier



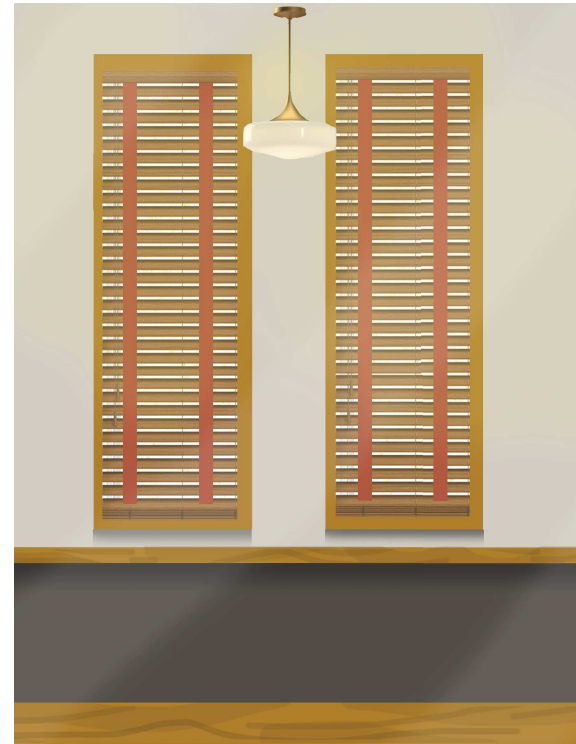
Department Signage

# Typical Departments

## Color Elevations



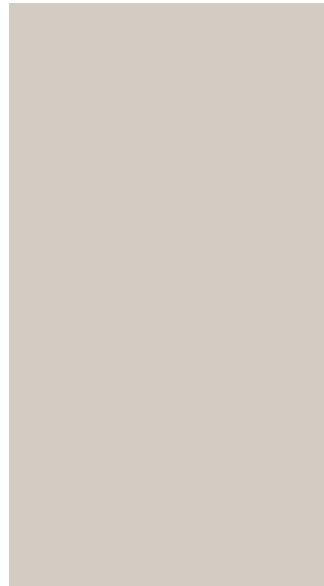
Lower Level  
Color Elevation



First Floor  
Color Elevation



Second Floor  
Color Elevation



Overall Paint



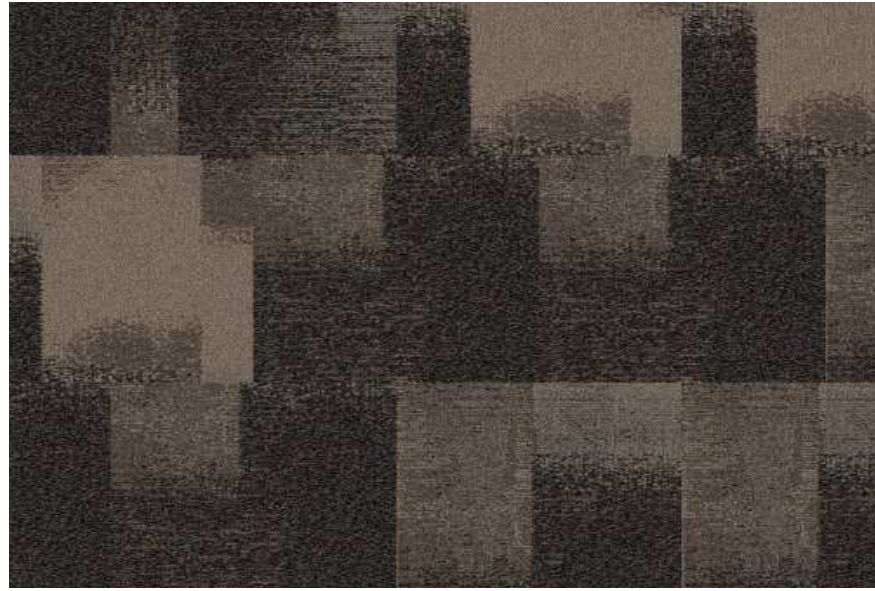
Accent Paint



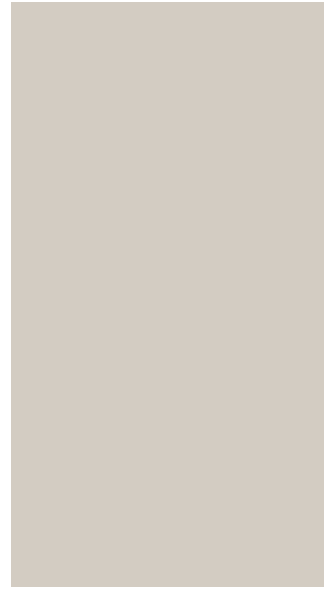
Pendant Light  
First & Second Floors

# Typical Departments

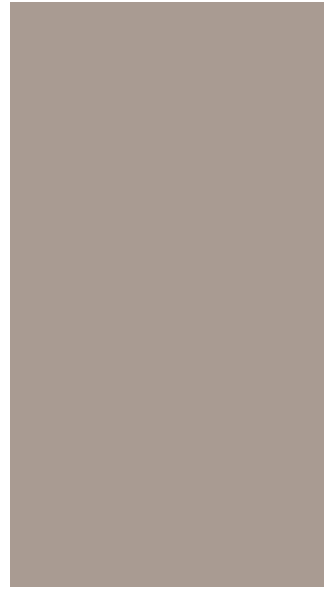
New Furniture & Finishes Option 1



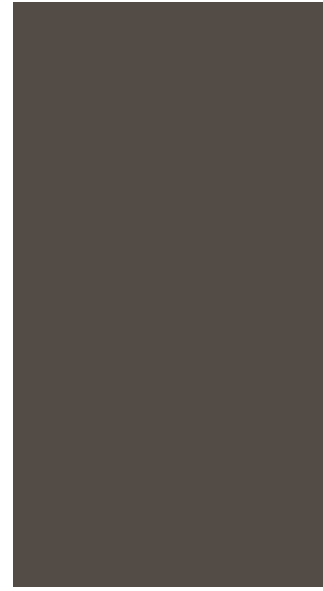
Typical Carpet



Overall Paint



Accent Paint



Accent Paint



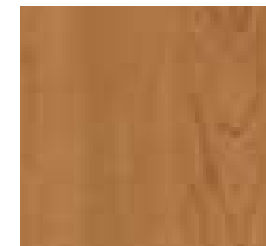
Pendant Light



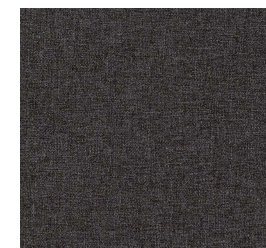
New Workstation



Example of Desk Panel System



Desk Laminate



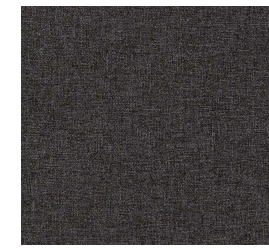
Seat Fabric - Task Chair



Task Chair



Chair Fabric - Guest Chair



Seat Fabric - Task Chair

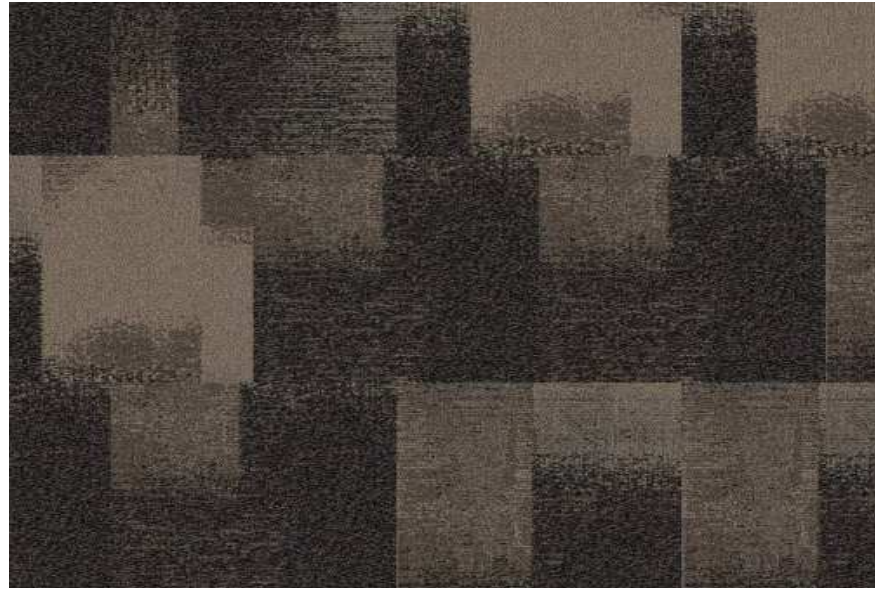


Guest Chair

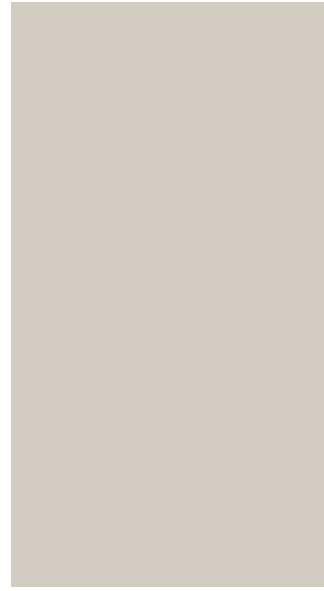


# Typical Departments

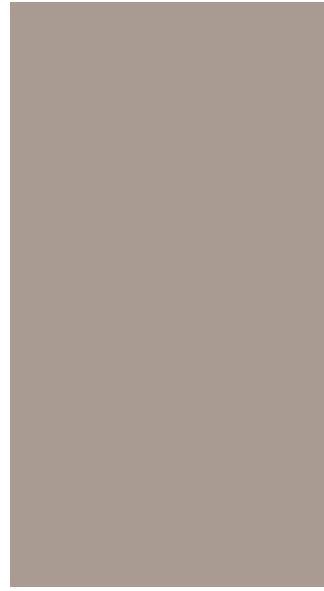
New Furniture & Finishes Option 2 - From Justice Center



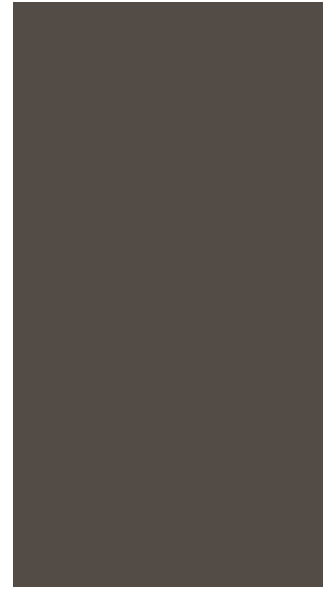
Typical Carpet



Overall Paint



Accent Paint



Accent Paint



Pendant Light



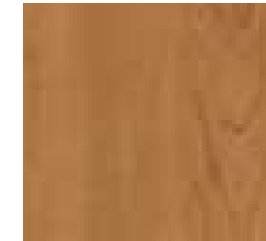
New Workstation



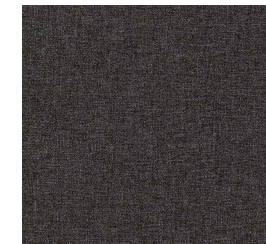
New Workstation



Guest Chair



Desk Laminate



Fabric - Guest Chair

# Typical Departments

Furniture to Remain or Relocate



Auditor's Desks



Clerk's Counter



Recorder's Counter



Assessor's Desk



Auditor's Counter



Treasurer's Table

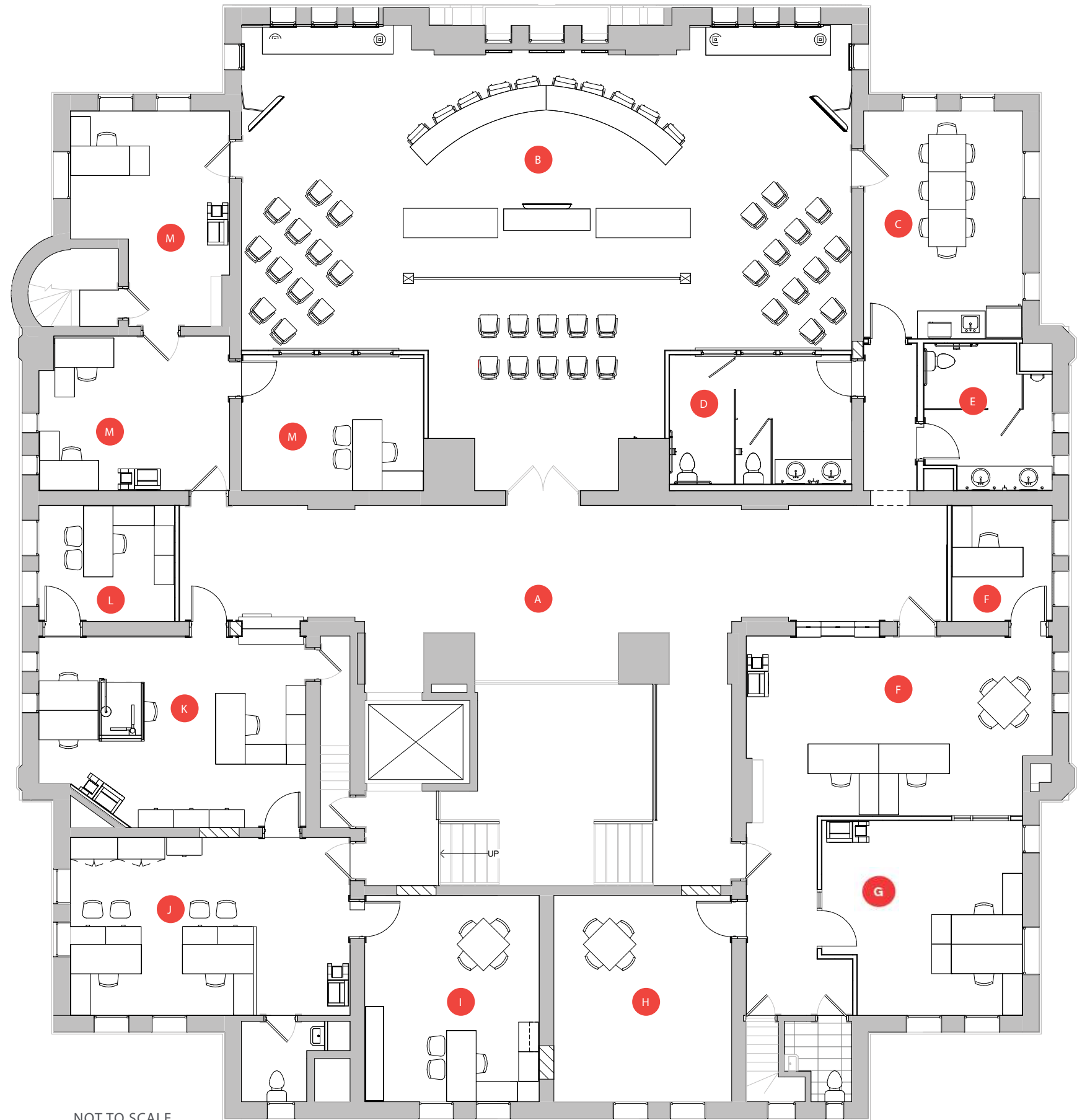


Surveyor's Counter

# Overall Plan

Second Floor

- A Main Corridor
- B Council Meeting Room
- C Breakroom
- D Women's Restroom
- E Men's Restroom
- F Surveyor Department
- G IT Department
- H Surveyor Vault
- I Economic Development Director Office
- J Economic Development Department
- K Building Planning & Zoning Department
- L Building Planning & Zoning Admin. Office
- M Office Space

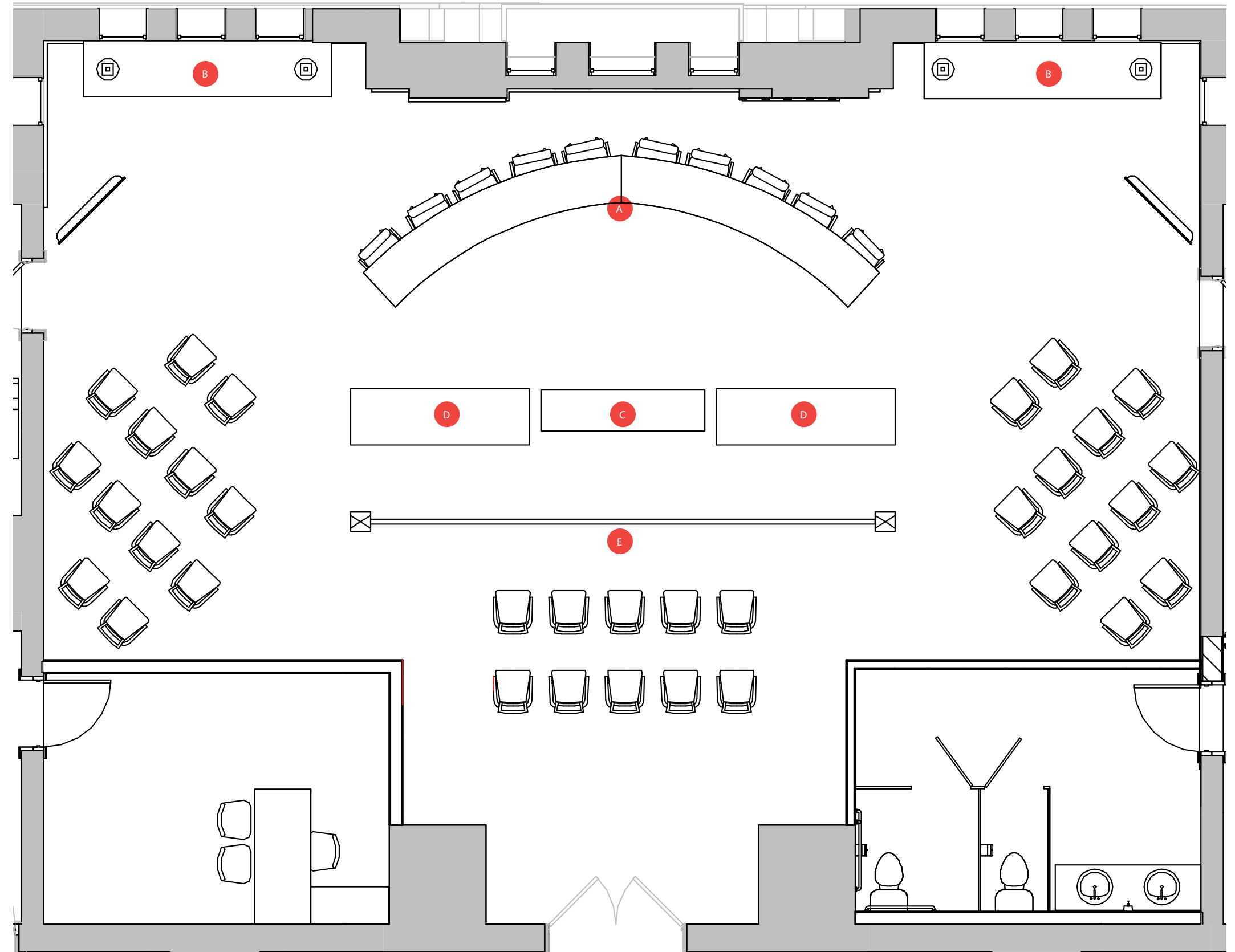


NOT TO SCALE

# Meeting Room

Option 1 - 10 Seats

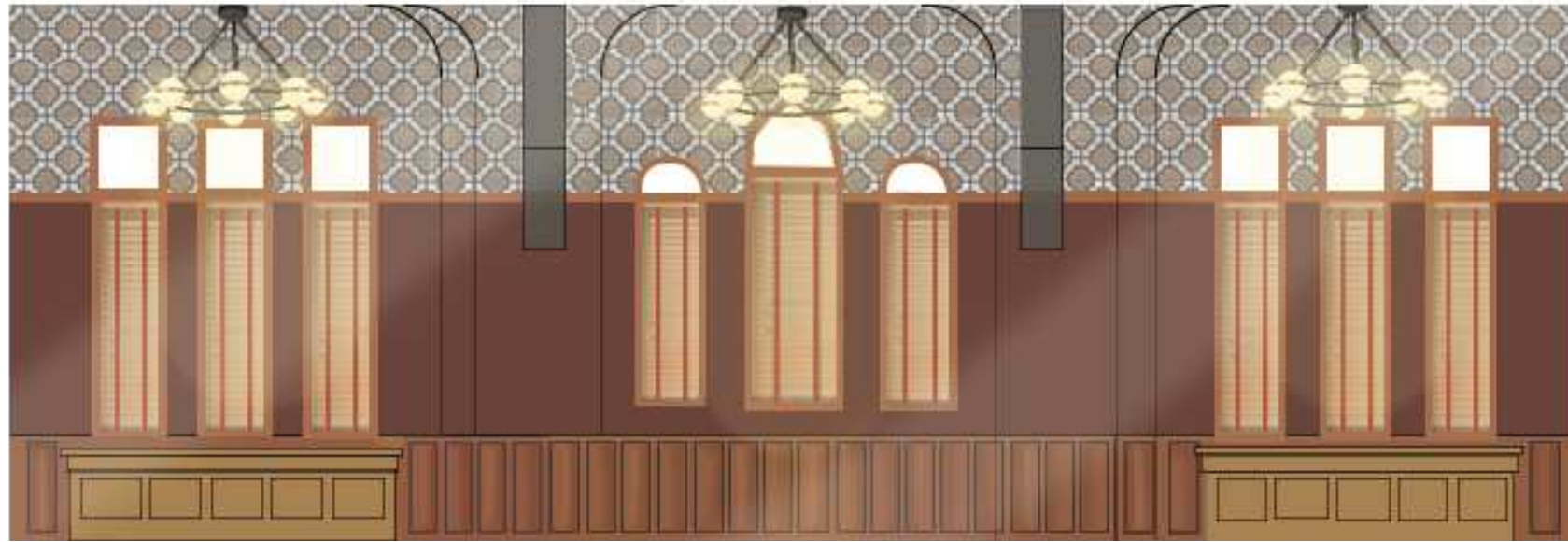
- A Council Meeting Table
- B Auditor's Table
- C Judge's Bench
- D Assessor's Table
- E Railing



NOT TO SCALE

# Meeting Room

Color Elevation - Option 2



Elevation 01



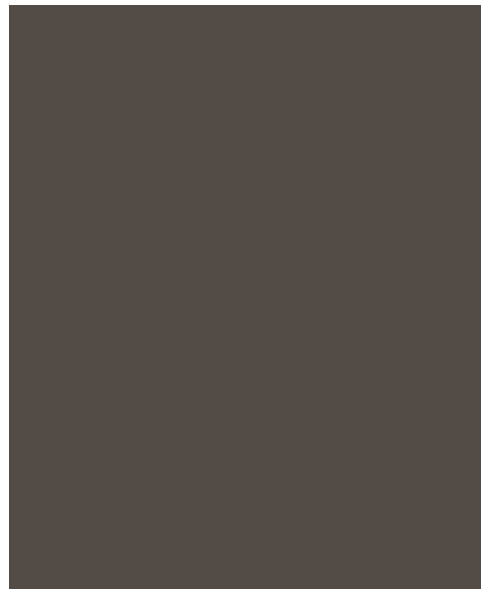
Existing Space



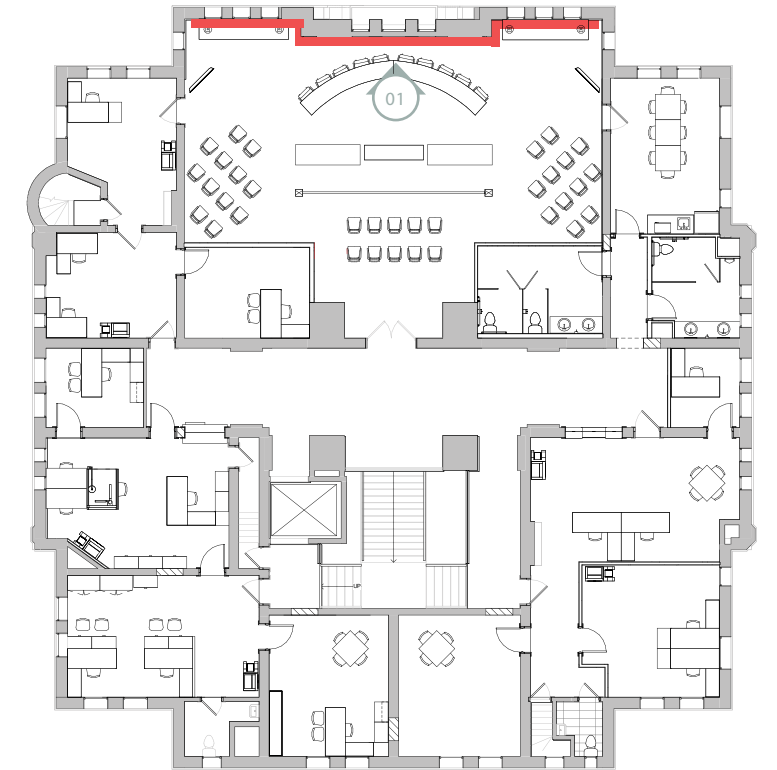
Wallcovering



Accent Paint



Accent Paint



Key Plan

# Meeting Room

Rendering Option 2



# Meeting Room

## Furniture & Fixtures



Council Member Chair



Chair Vinyl



Assembly Chair



Chair Seat & Back Vinyl



Chair Back Fabric

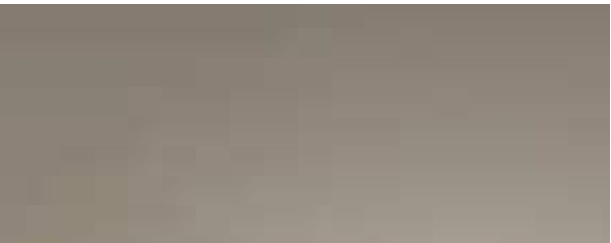


Council Meeting Table



Table Wood Finish

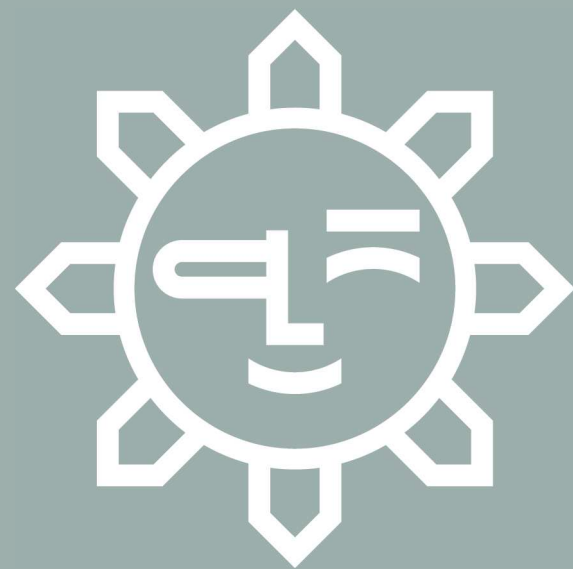
Restrooms  
Inspiration





Breakroom  
Inspiration





Thank you!